



Annual TTNC Evening

2018

Coming up...

- Introduction to the Harbour Masters and the PLA
- What's new?
- Thames Vision update
- A day in the life of a tug master
- What's happening on the Thames?
- A Journey of Thames experiences
- Q&A

Harbour Master Upper Team



Mark Towns
Harbour Master (Upper)



Nick Evans
Deputy Harbour Master (Upper) 1



Josh Rylah
Deputy Harbour Master (Upper) 2



Darren Knight
Assistant Harbour Master (Recreational)

Harbour Master Lower Team



Cathryn Spain
Harbour Master (Lower)

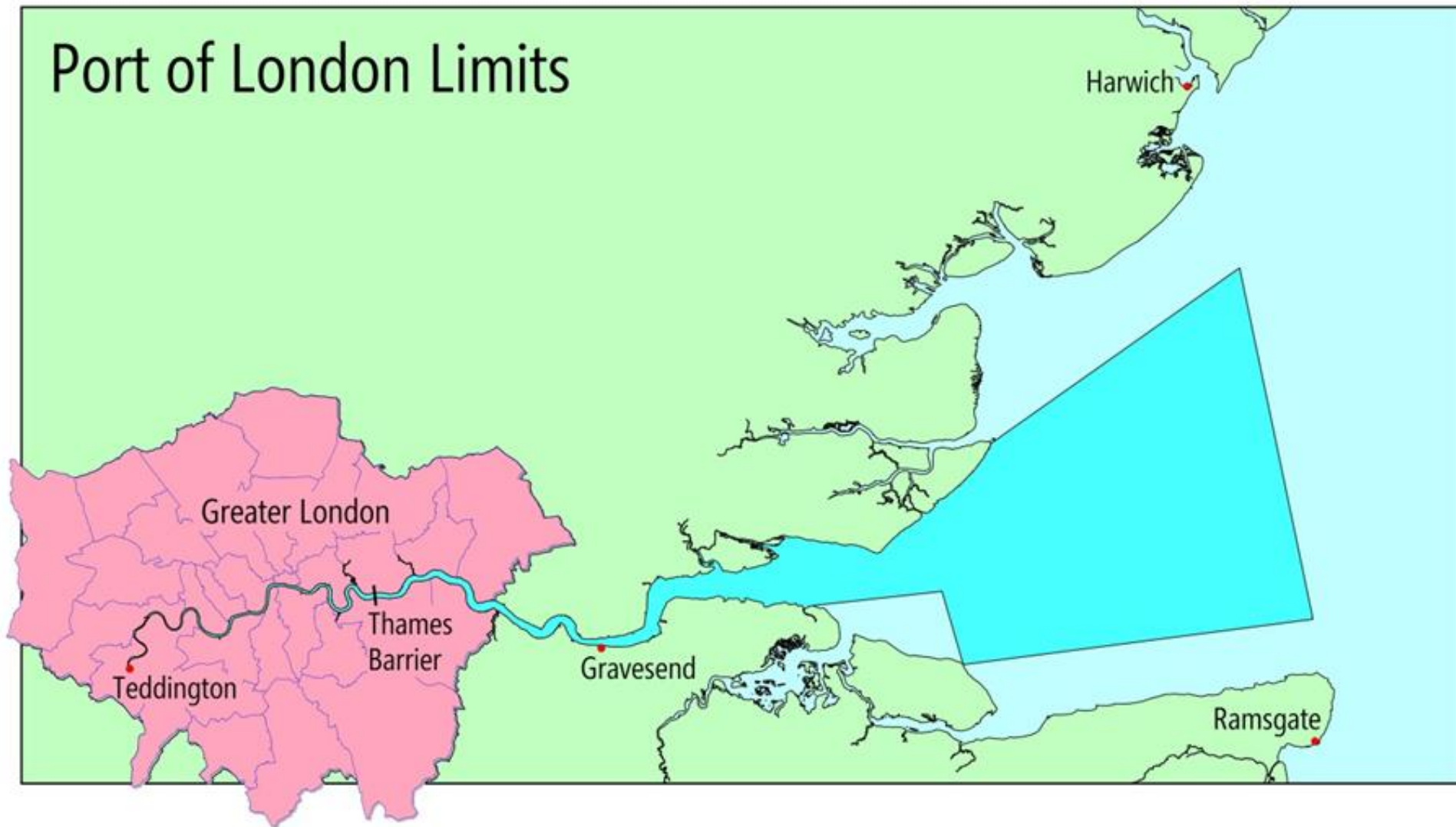


Lyn Kindlen-Funnell
Deputy Harbour Master (Lower)



Tim Corthorn
Deputy Harbour Master (Lower)

Port of London Limits



What the PLA does

River navigation and safety



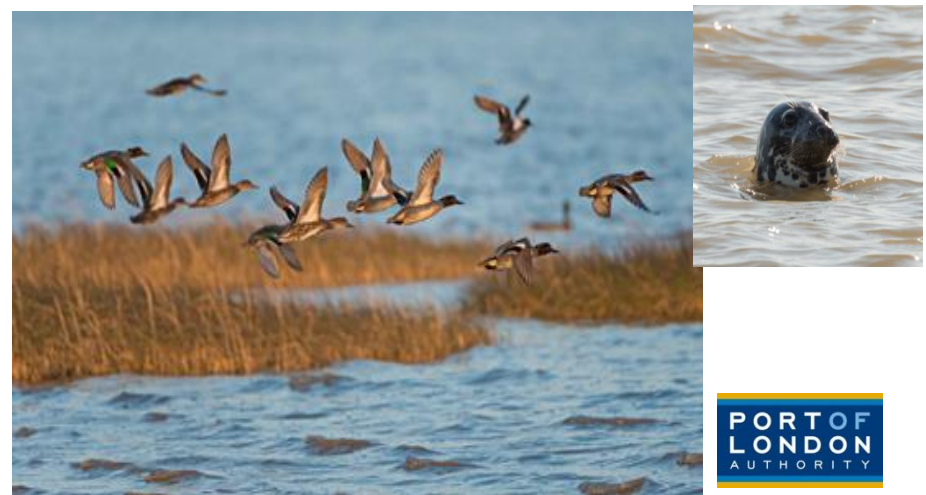
Planning consultation and technical expertise



Bringing people together and promoting the river

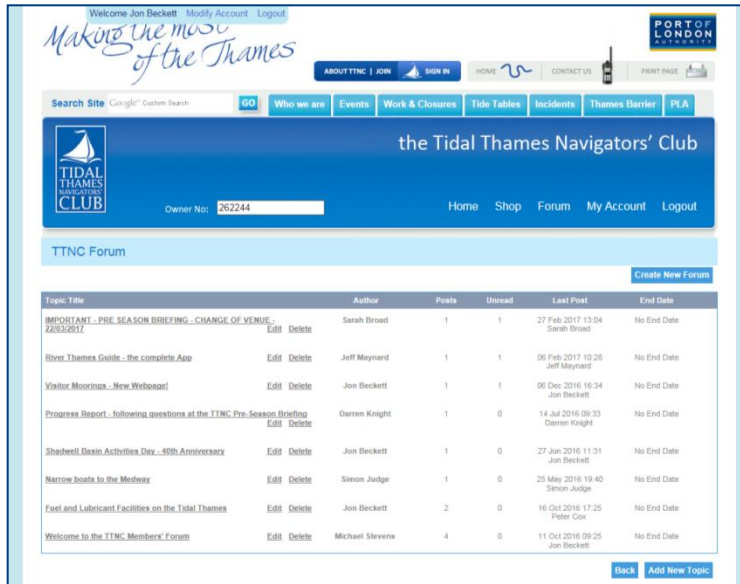


Environmental stewardship

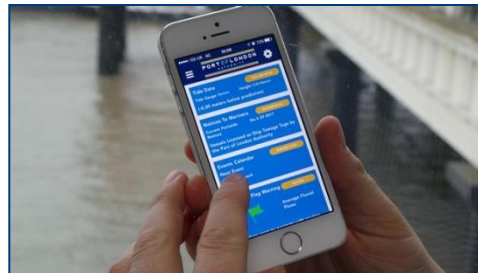


Don't forget to look at...

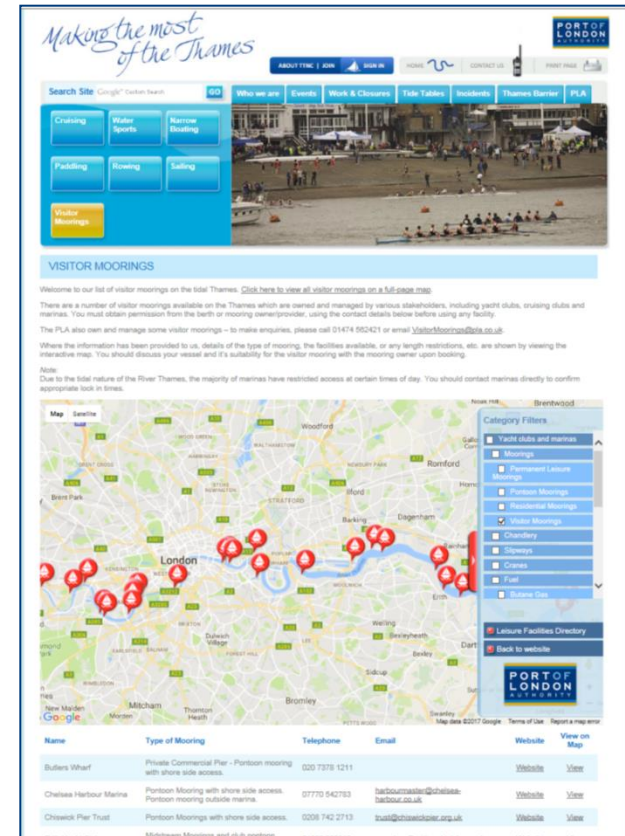
- TTNC Club Forum
 - Post questions, event reviews



- PLA App
 - Free to download



- Visitor Moorings
 - New webpage





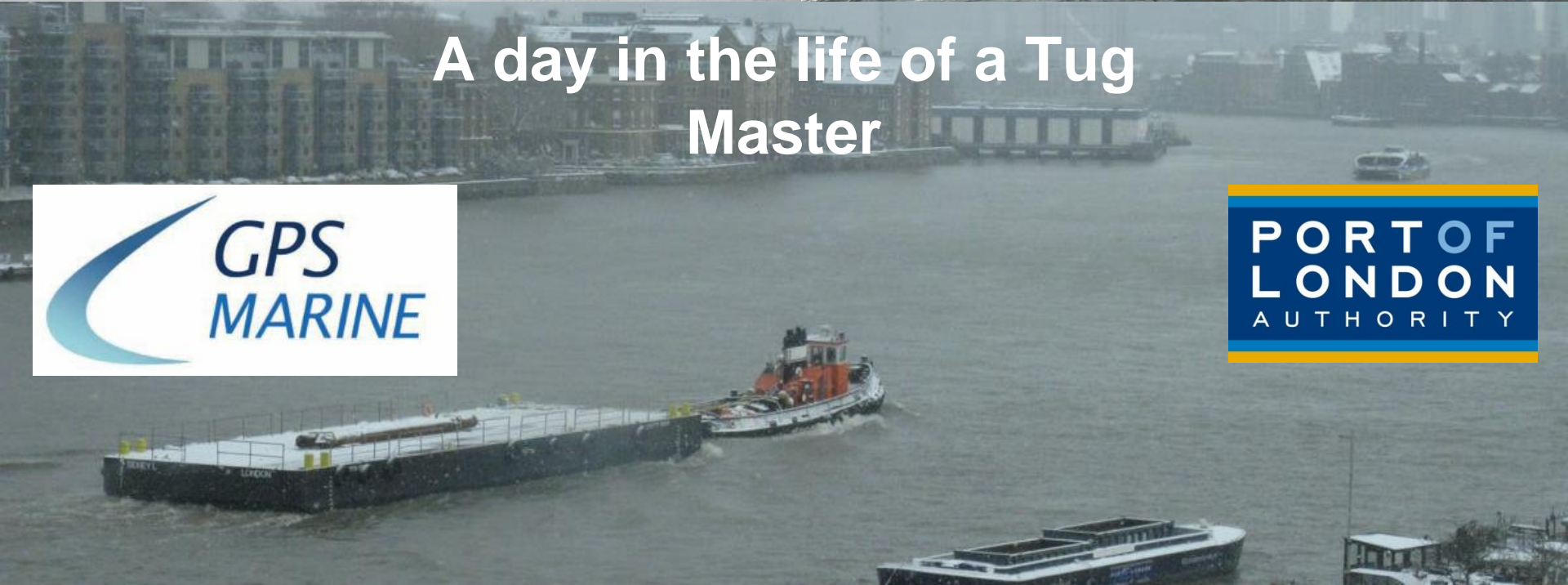
Thames Vision Project

Thames Vision – Watersports Participation

- Alistair Gale, new Thames Vision lead due to Katherine Riggs' promotion to CEO of Thames Skills Academy
- Regular liaisons with National Governing Bodies to foster opportunities and grow sports participation
- Established 'East London Watersports Forum'
- Held two meetings to understand visitor mooring expectations and created a new 'Mooring and Marina's Operators Forum'
- PLA Sports & Recreational Database – *online soon!*



A day in the life of a Tug Master



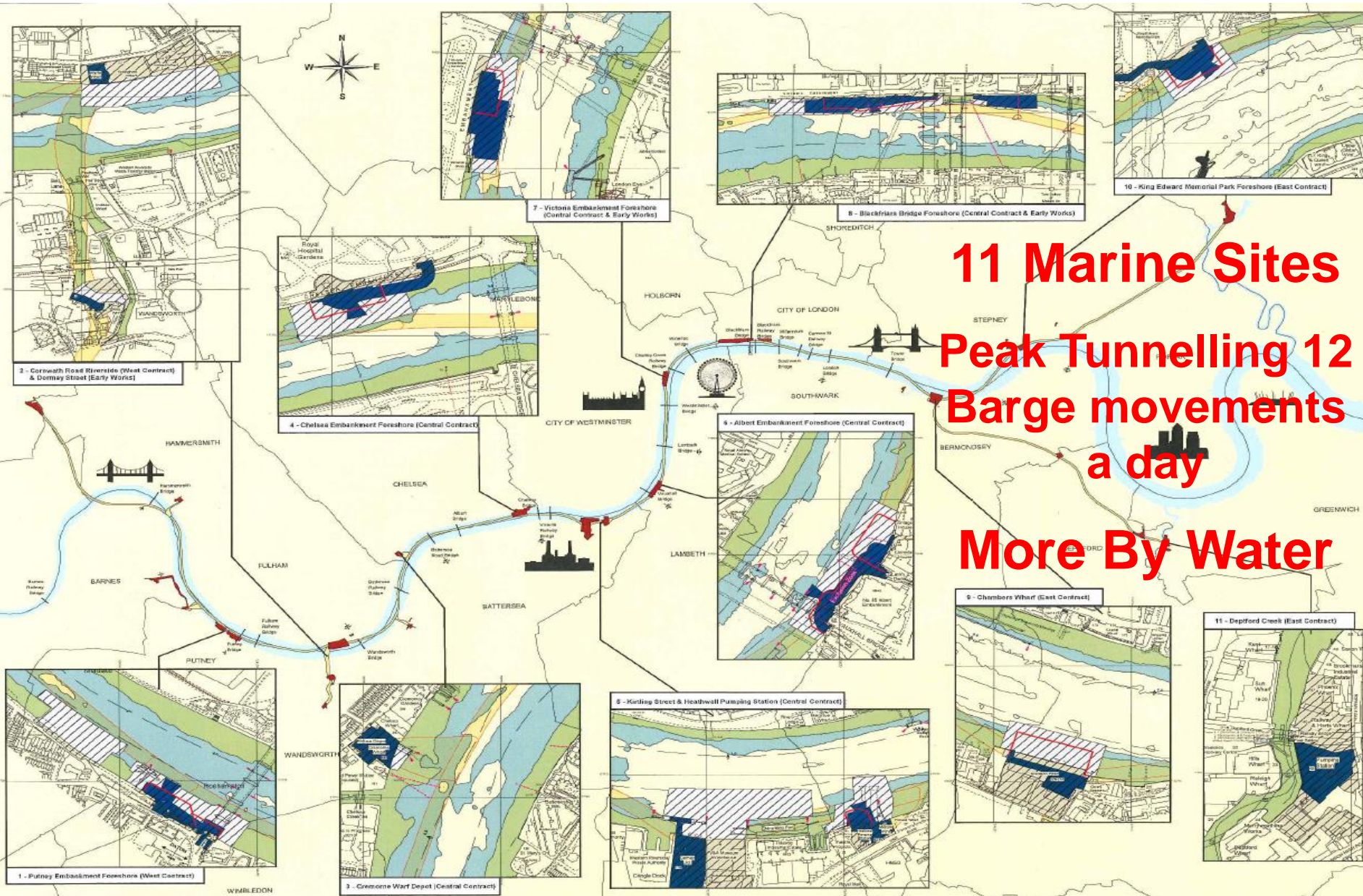


What's Happening in London?

Thames Activities

- Events in 2017-2018
 - Filming on the Thames
 - Arrival of the Maserati Sailing Vessel
 - Annual events
 - Stunts and Promotions
 - Thames Sailing Barge Parade
 - Cruise Ships

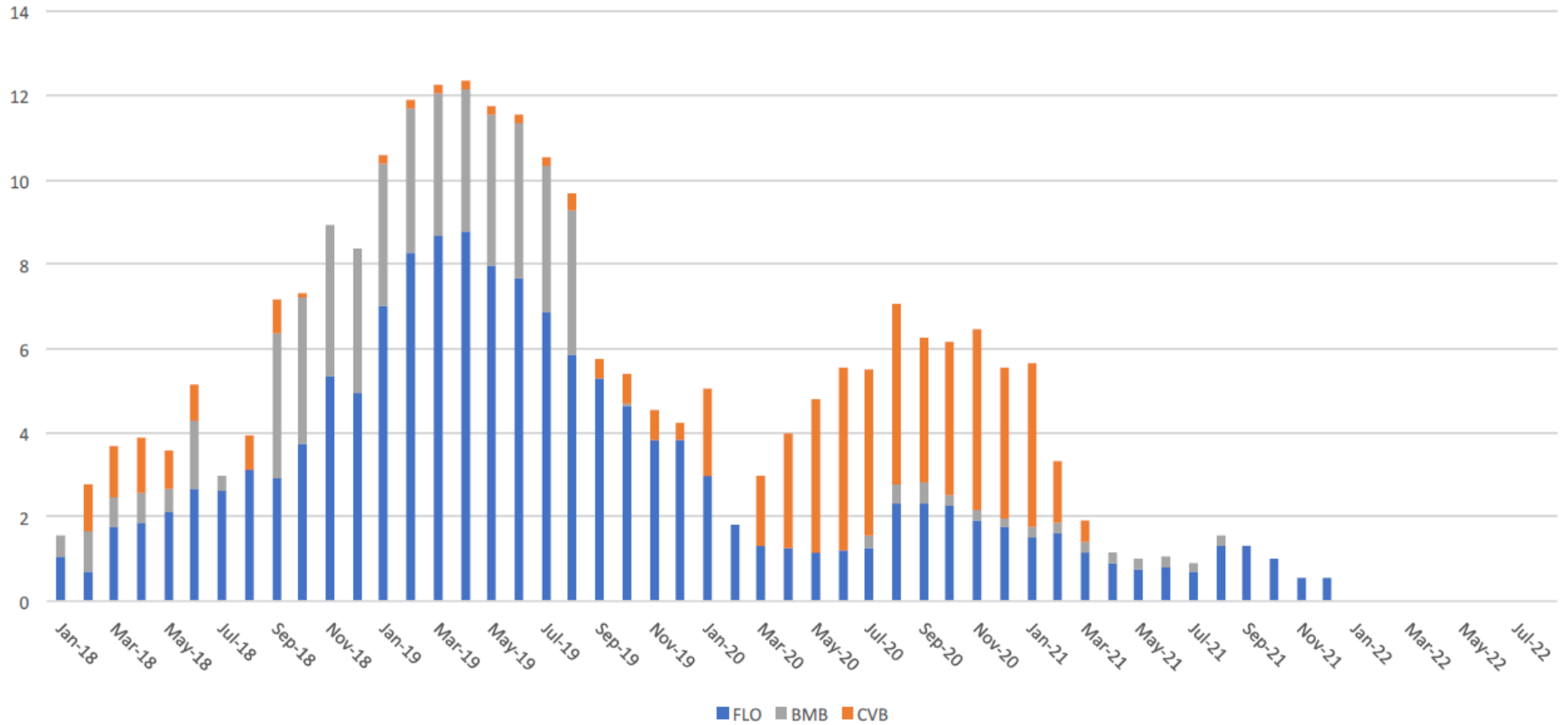
2018 Thames Activities



11 Marine Sites
Peak Tunnelling 12
Barge movements
a day
More By Water

Tideway Project

Average movements per working 24-hour period Feb-18



Tideway Project – King Edward Memorial Gardens



Tideway Project – Chambers Wharf



Tideway Project – Blackfriars



Tideway Project – Victoria Embankment



Tideway Project – Albert Embankment



Tideway Project – Kirtling Street



Tideway Project – Carnwath Road



Tideway Project – Further information

Website: www.tideway.london

24-hr Helpdesk: 08000 30 80 80

2018 Thames Activities

- University Boat Race – 24th March
- Tall Ships Event – 4 - 8th July
- Traditional Rowing Events – NtM TBC
- Thames Historic Barge Driving Race – 30th June
- Doggett Coat and Badge - 4th September
- Great River Race – 8th September
- SUP Big Ben Challenge – 23rd September

www.pla.co.uk or www.boatingonthethames.co.uk





PORT OF LONDON AUTHORITY

How big can they get?

Everyone uses the water together



What do these vessels have in common?



BARZAN, – London' Longest ULCS



MONACO MAERSK - London's largest to date



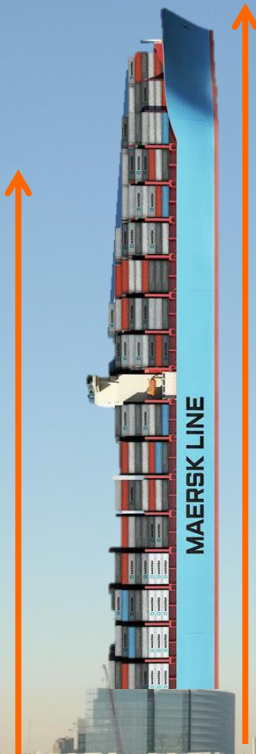
MONACO MEARSK – London's Largest today





THE SHARD – 309.6m

MONACO MAERSK – 399m



MAERSK LINE

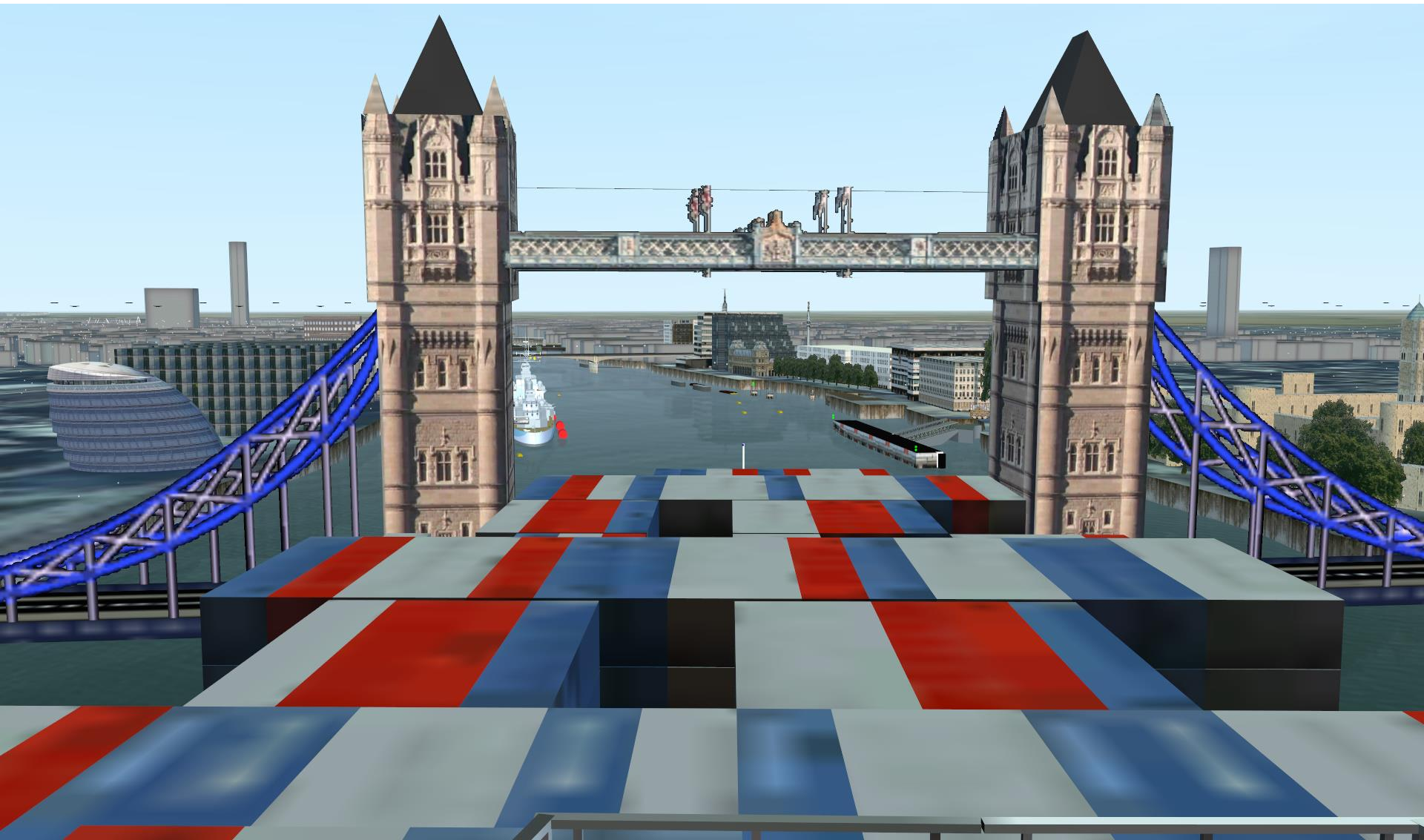
The Thames Flood Barrier



Tower Bridge

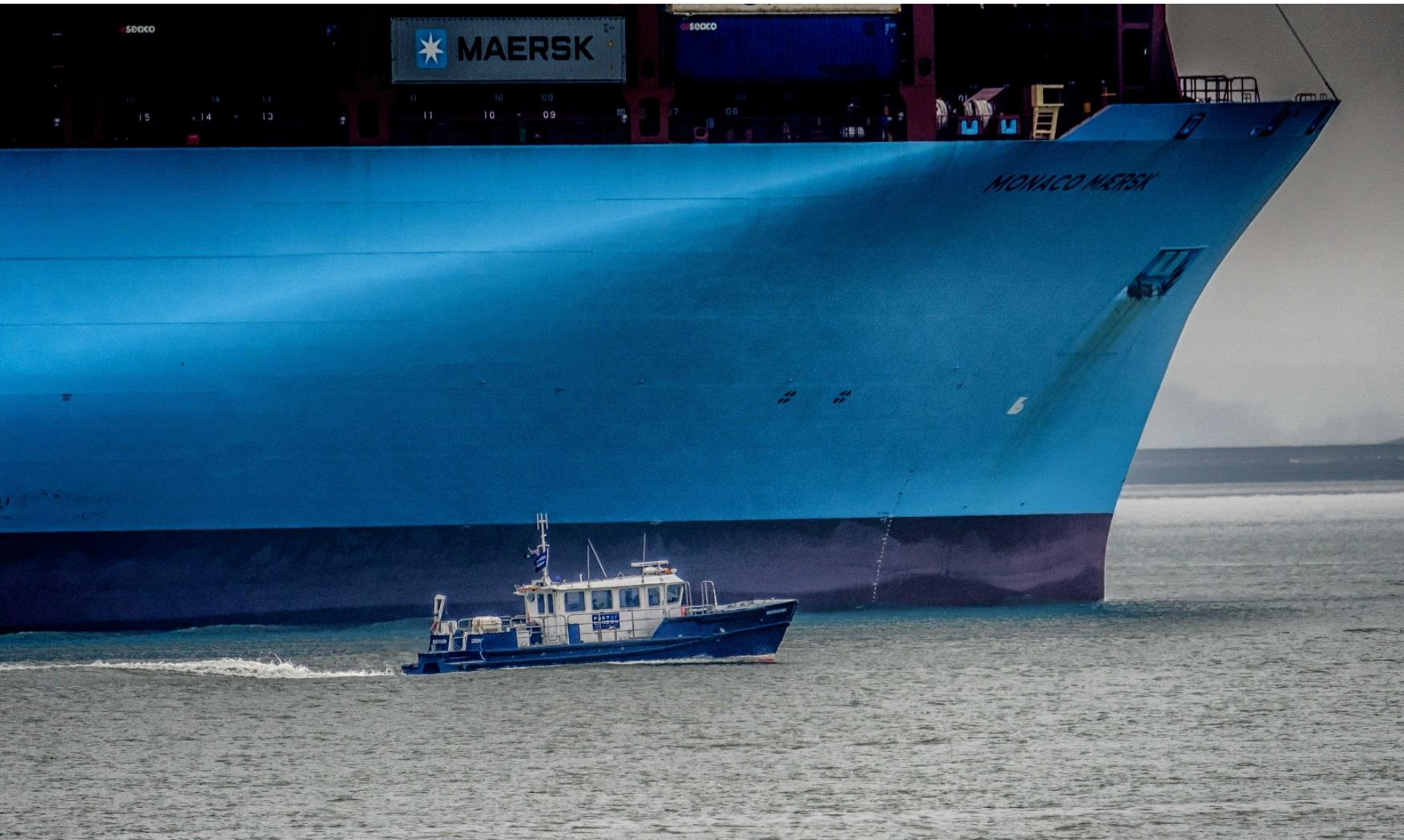


Tower Bridge



Harbour Launch comparison





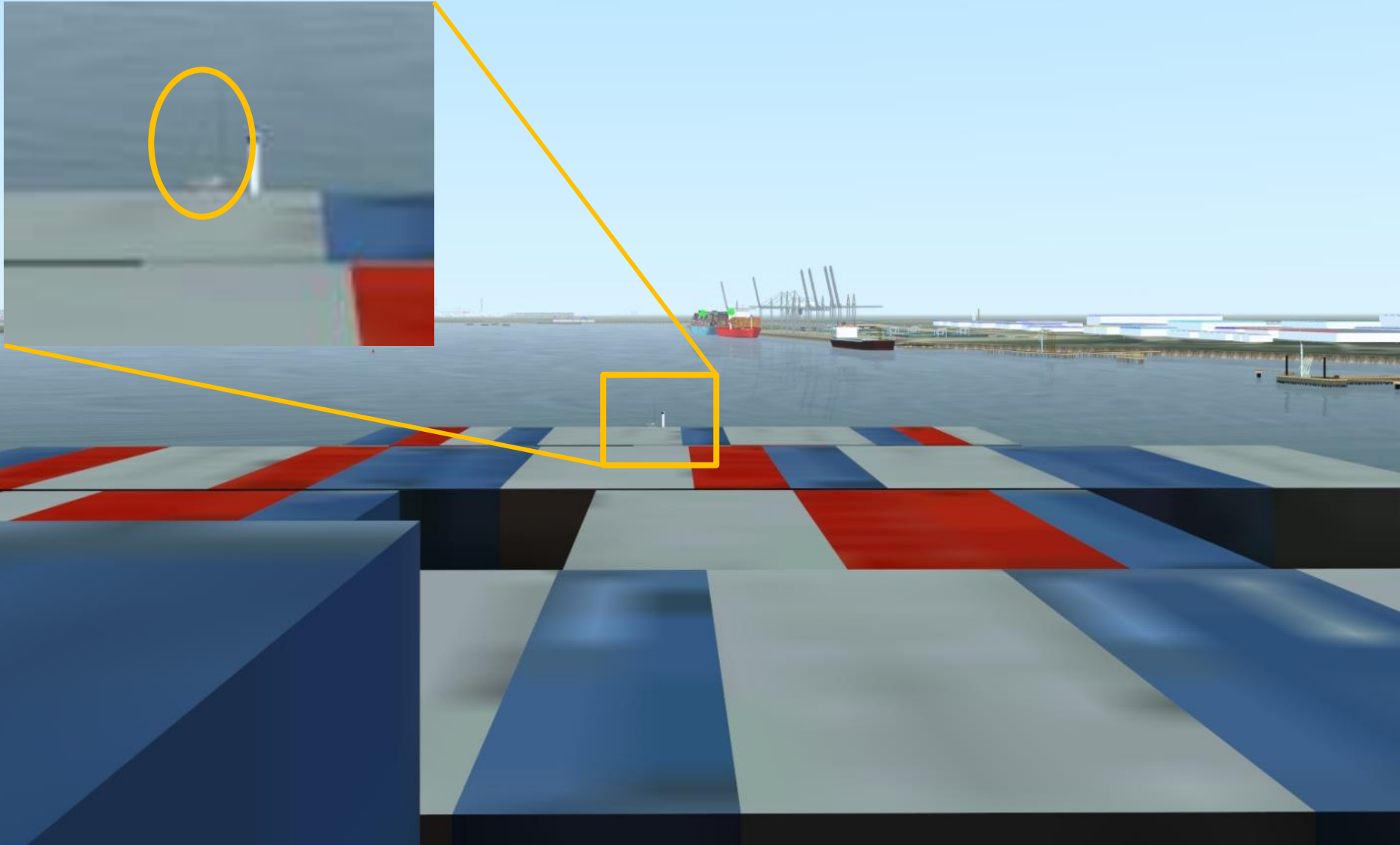
From a yacht's perspective



From a yacht's perspective



From a pilot's perspective



Thinking of others



The Thames's Largest Cruise Liner



MEINE SHIFF 3



World's Largest Cruise Ship – Symphony of the Seas



Largest Cruise Ship UP RIVER – VIKING SKY



CRUISE SHIP COMPARISON

	LENGTH	BEAM	DRAFT	GRT	PASSENGERS
SYMPHONY OF THE SEAS	362m	66m	9m	228,021T	5518 passengers 2200 crew
MEINE SHIFF 3	293m	36m	8m	99,526T	2,500 passengers 1000 crew
VIKING SKY	228m	29m	6.5m	4,780T	930 passenger 465 crew

Biggest Shortsea RoRo Ferry - CELINE



PURFLEET - CRo



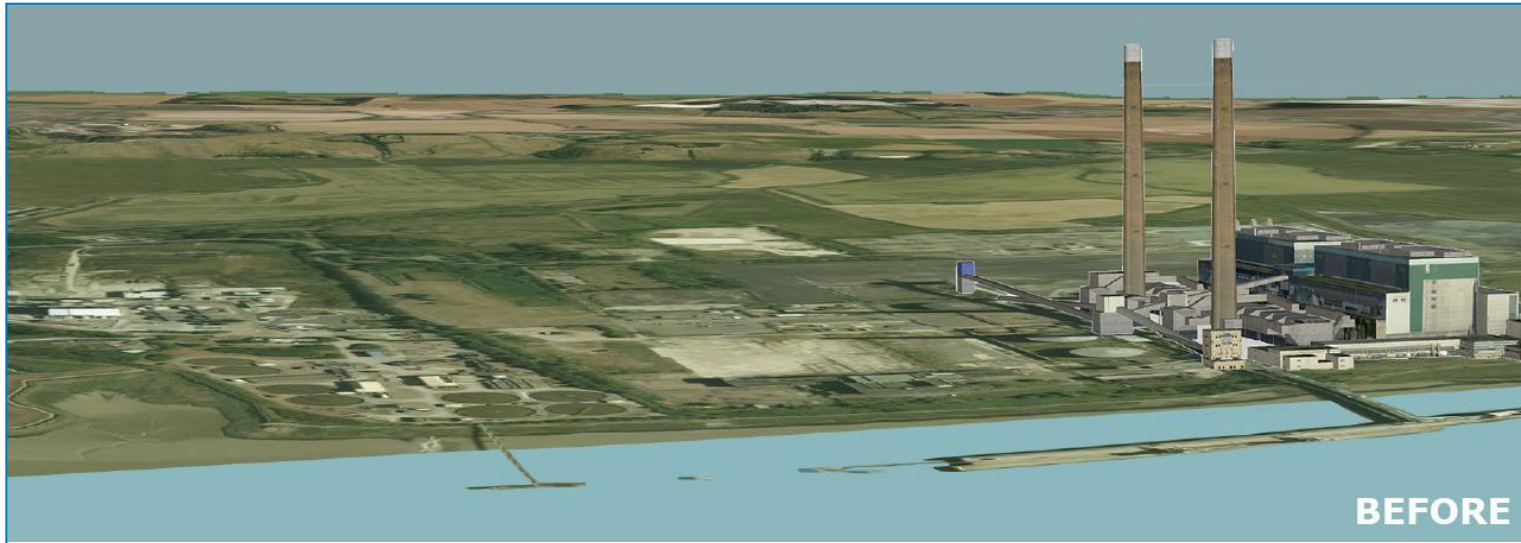
London Gateway



Port of Tilbury – Tilbury 2



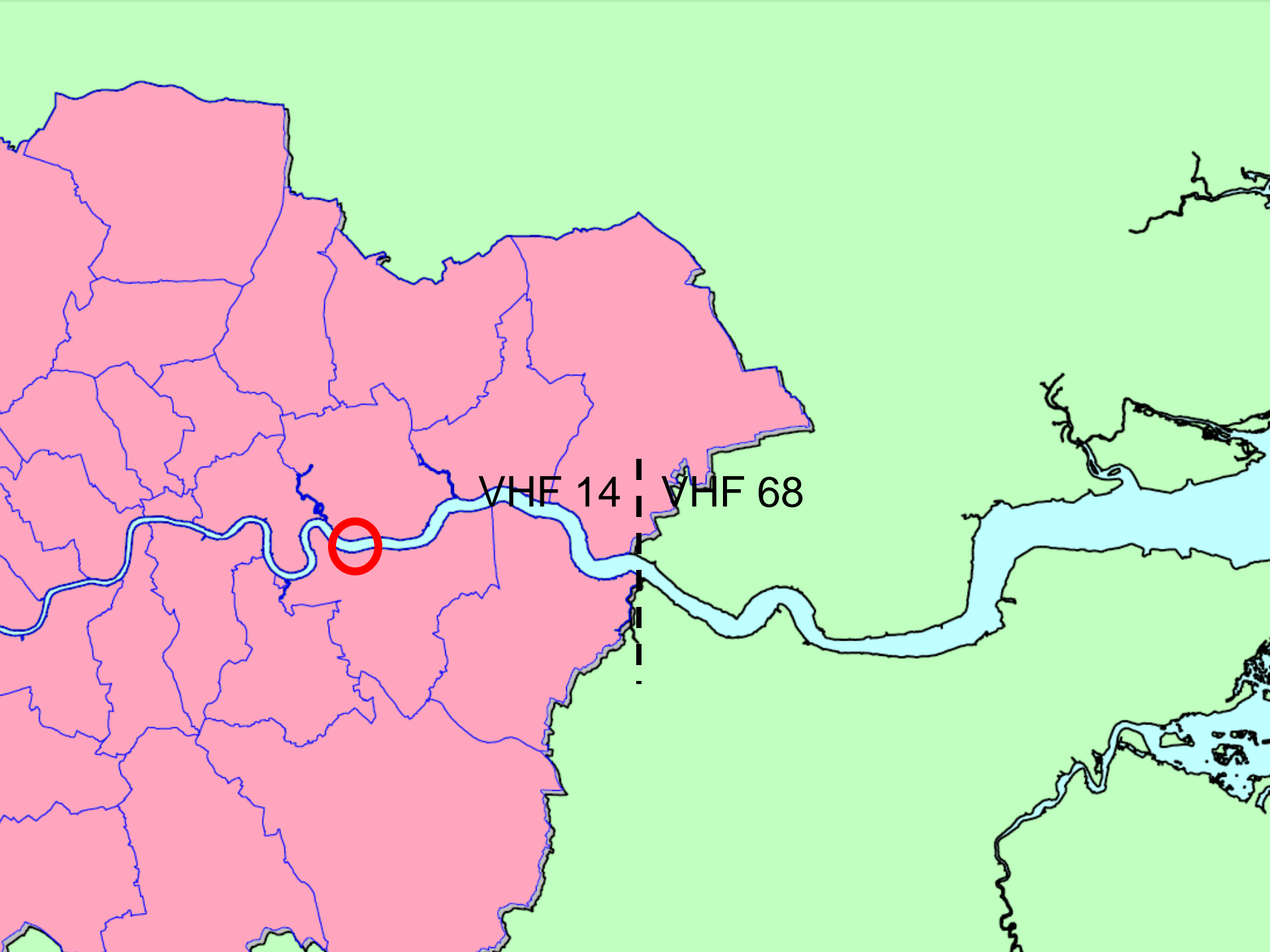
Port of Tilbury – Tilbury 2





**A Journey of Thames
Experiences
*The Sequel!***

Miles Featherstone

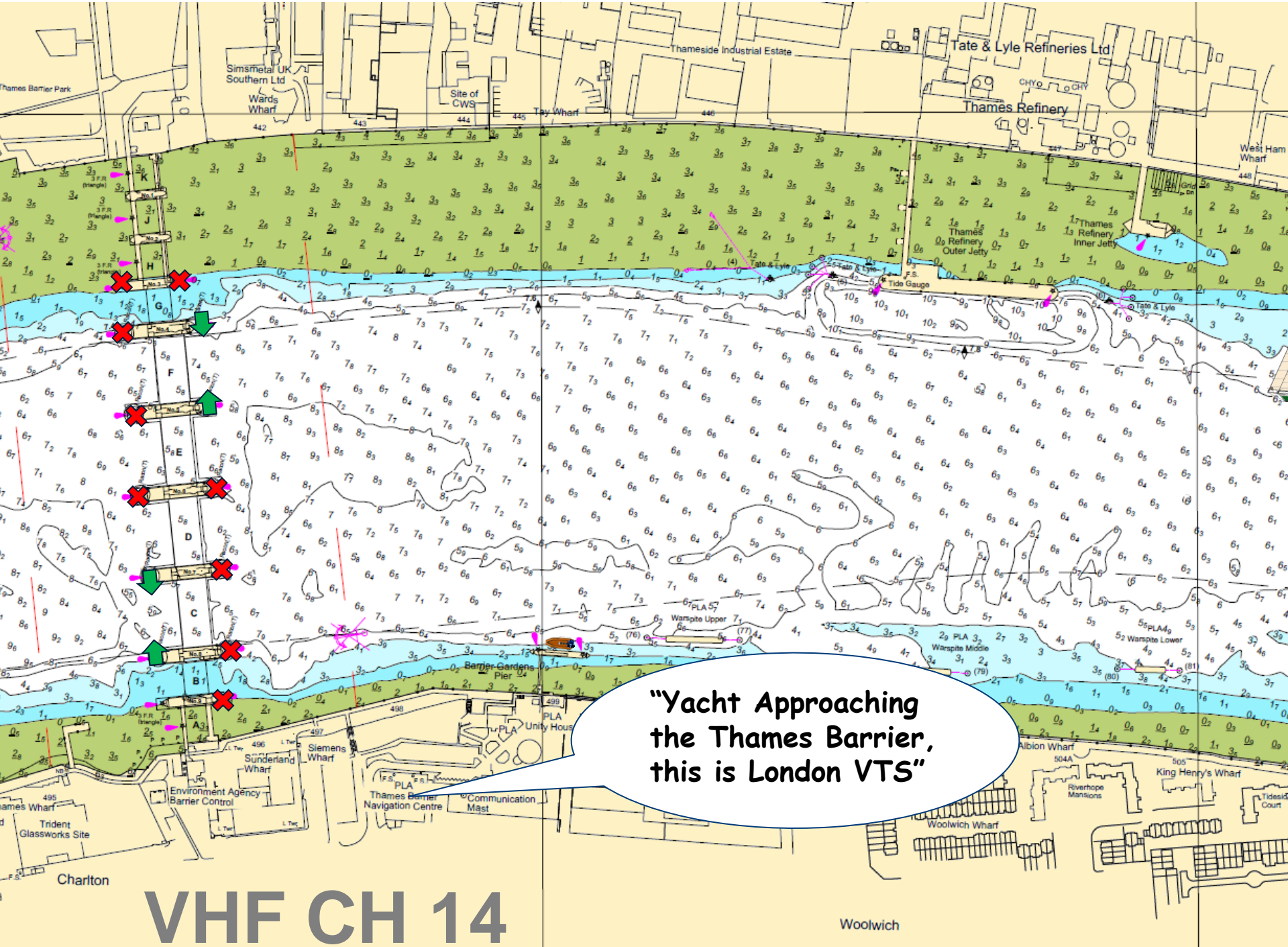


VHF 14

VHF 68







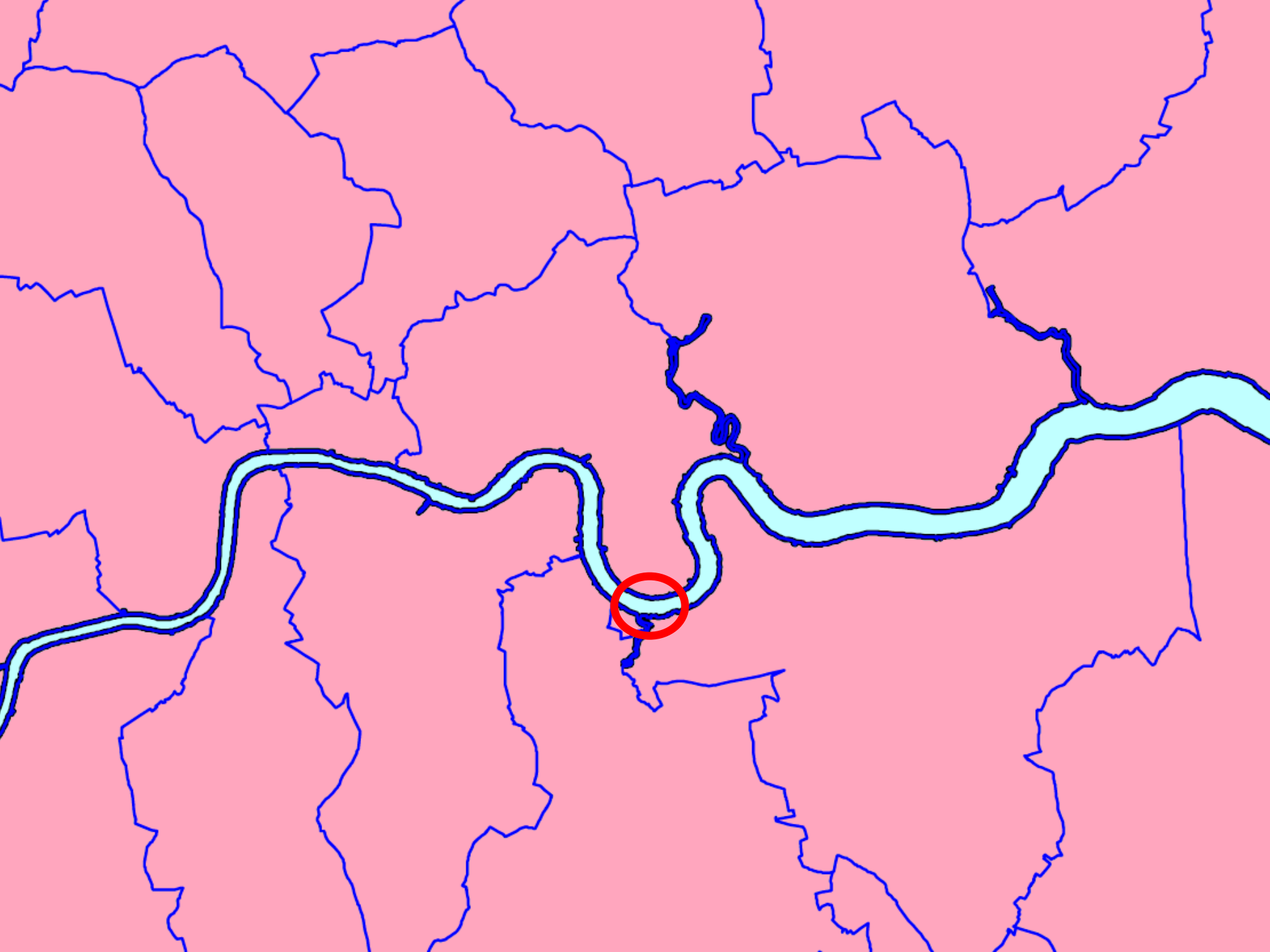
"Yacht Approaching the Thames Barrier, this is London VTS"

VHF CH 14

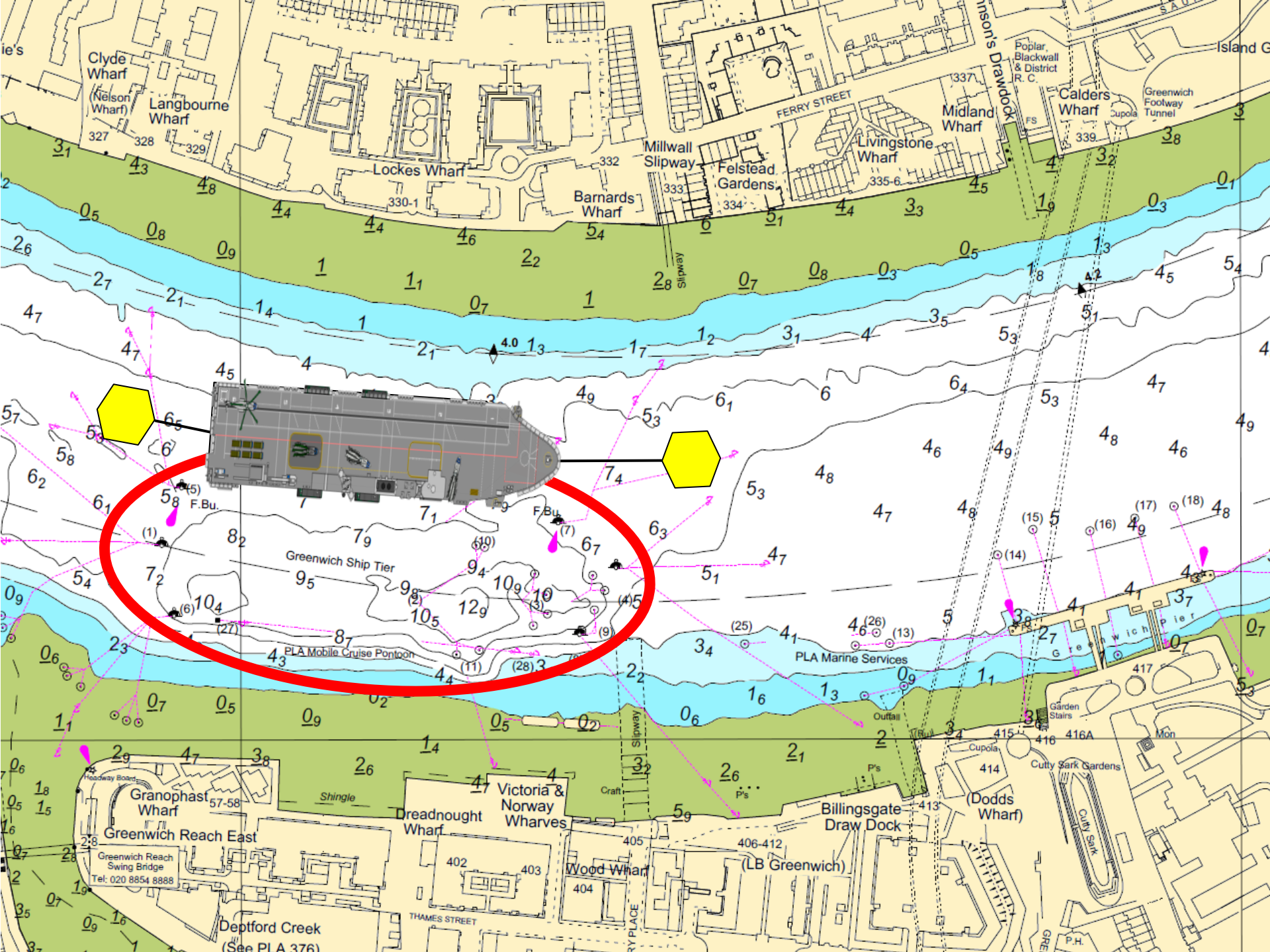
Woolwich







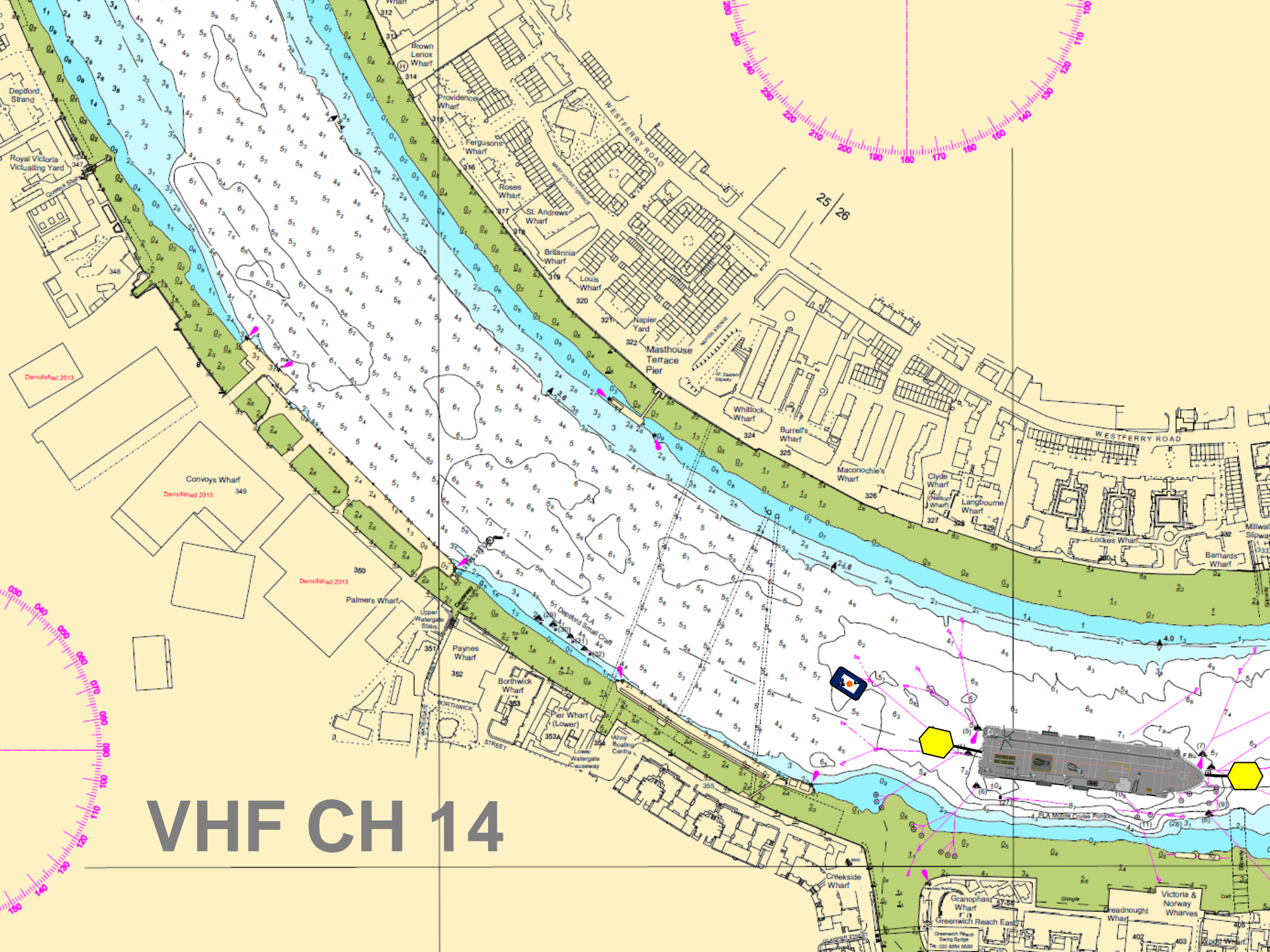




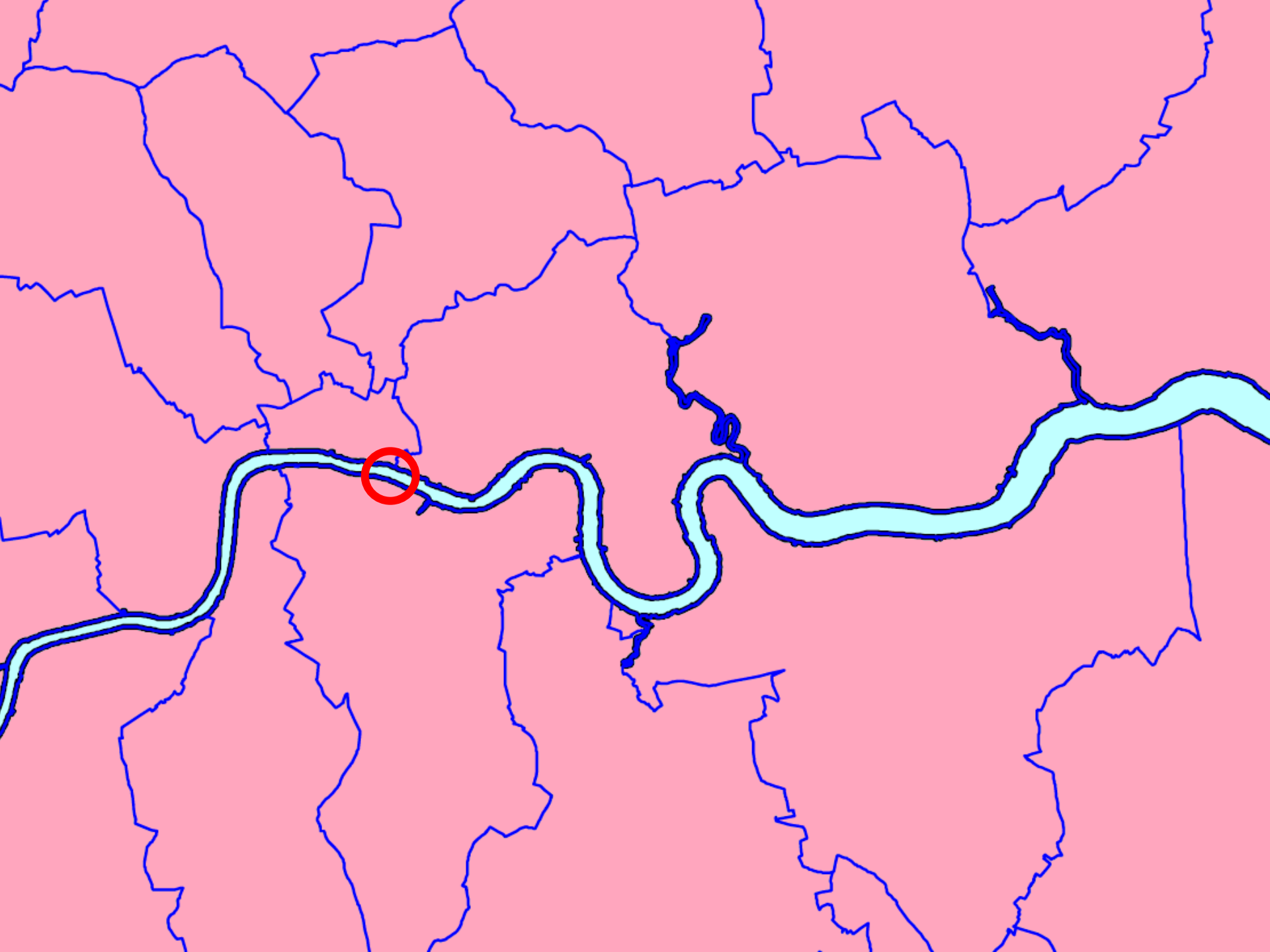




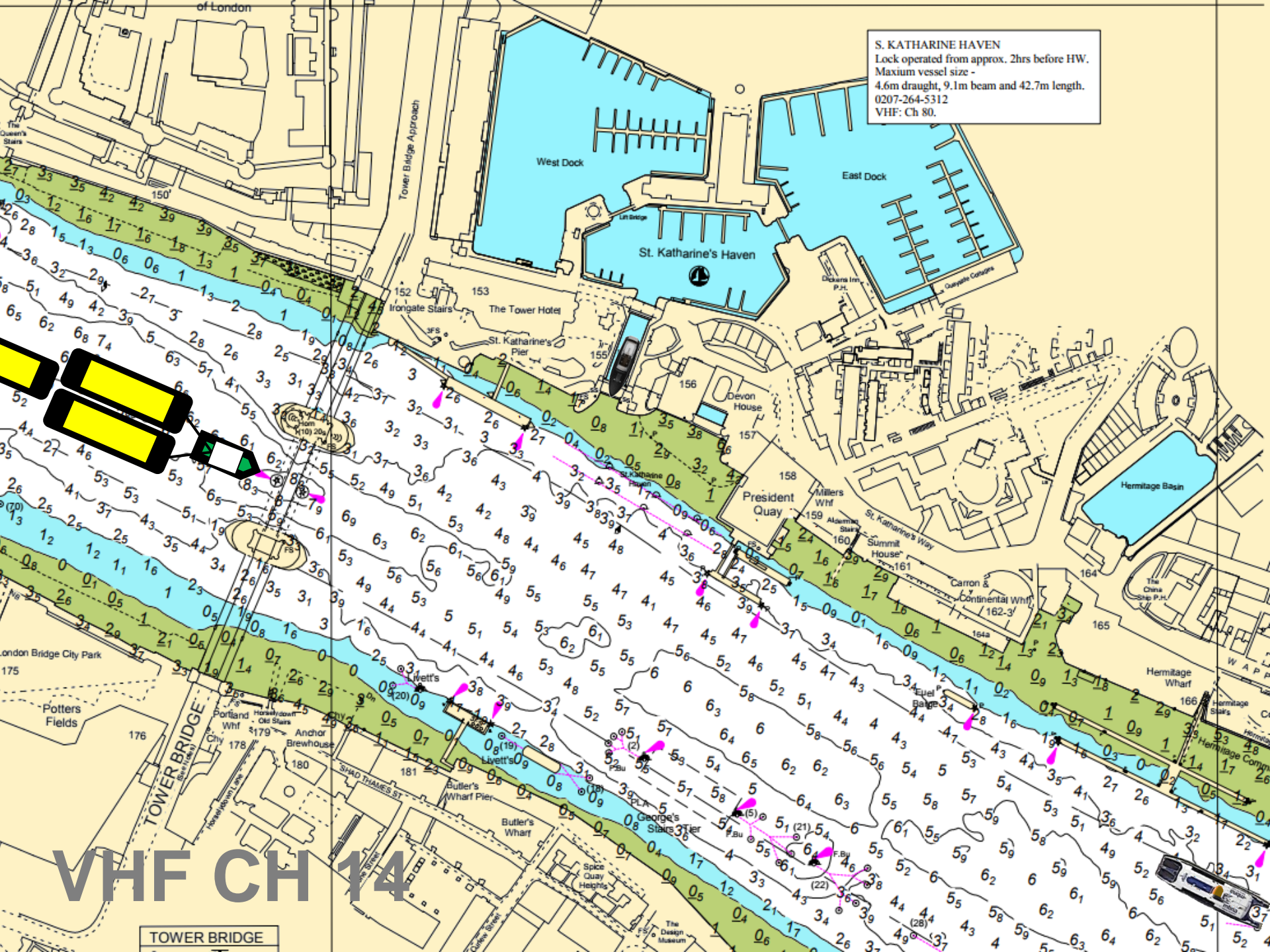




VHF CH 14

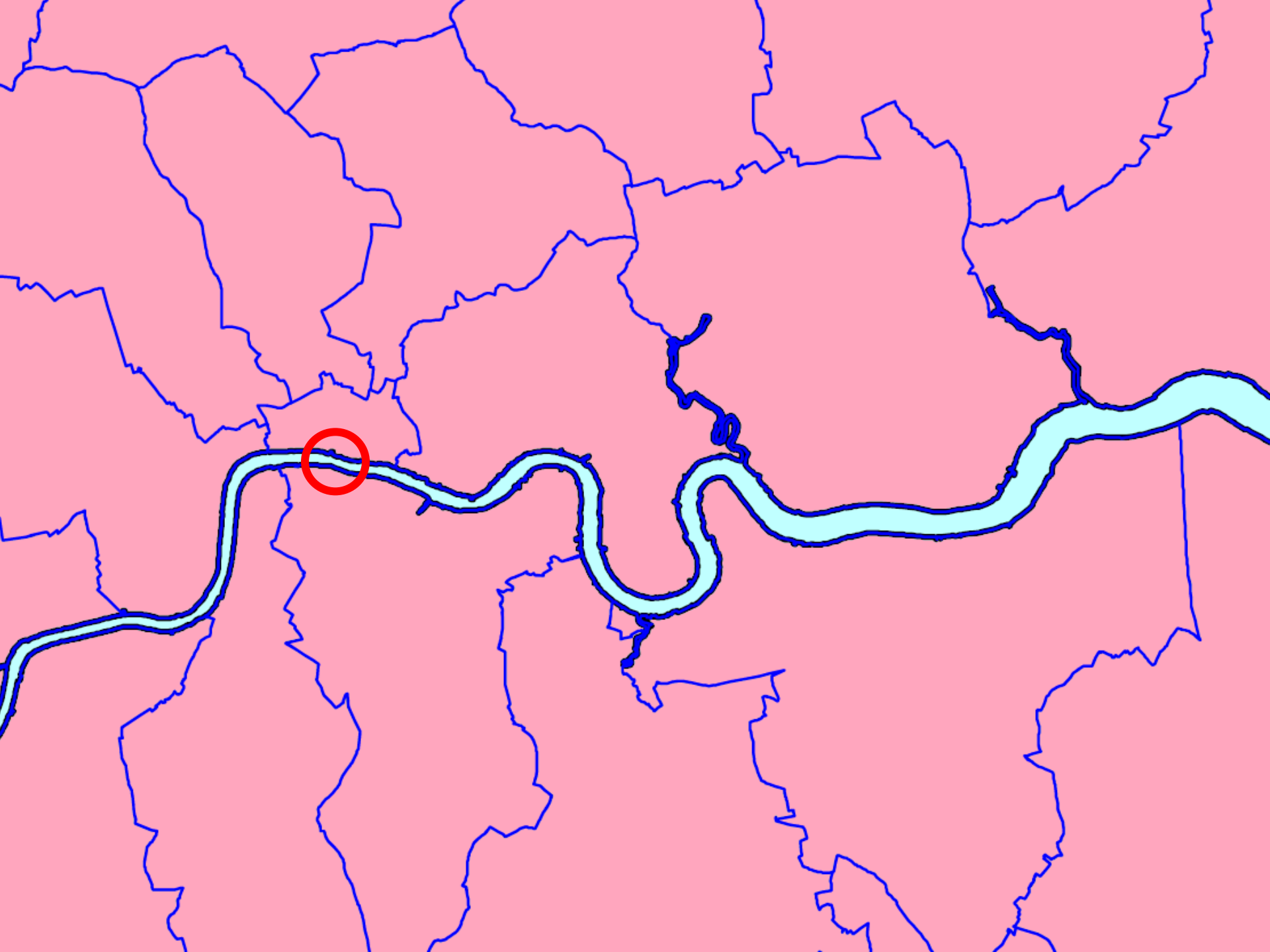


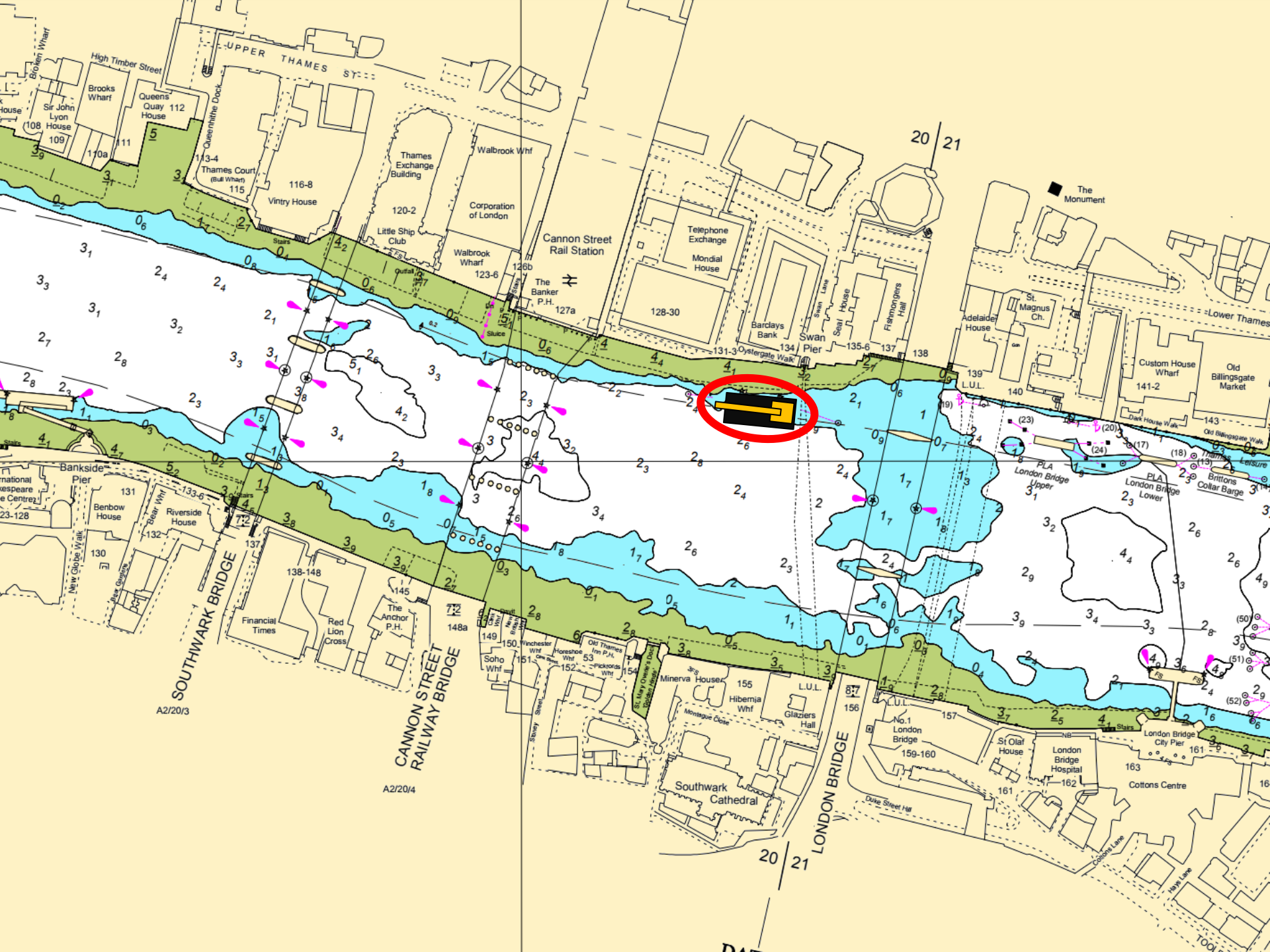
S. KATHARINE HAVEN
Lock operated from approx. 2hrs before HW.
Maximum vessel size -
4.6m draught, 9.1m beam and 42.7m length.
0207-264-5312
VHF: Ch 80.



VHF CH 14

TOWER BRIDGE





A2/20/3

A2/20/4

20 21

20 21



London

CPBS
MARINE SERVICES

ON HIRE FROM
www.cpbmarineservices.co.uk
01689 89 89 59

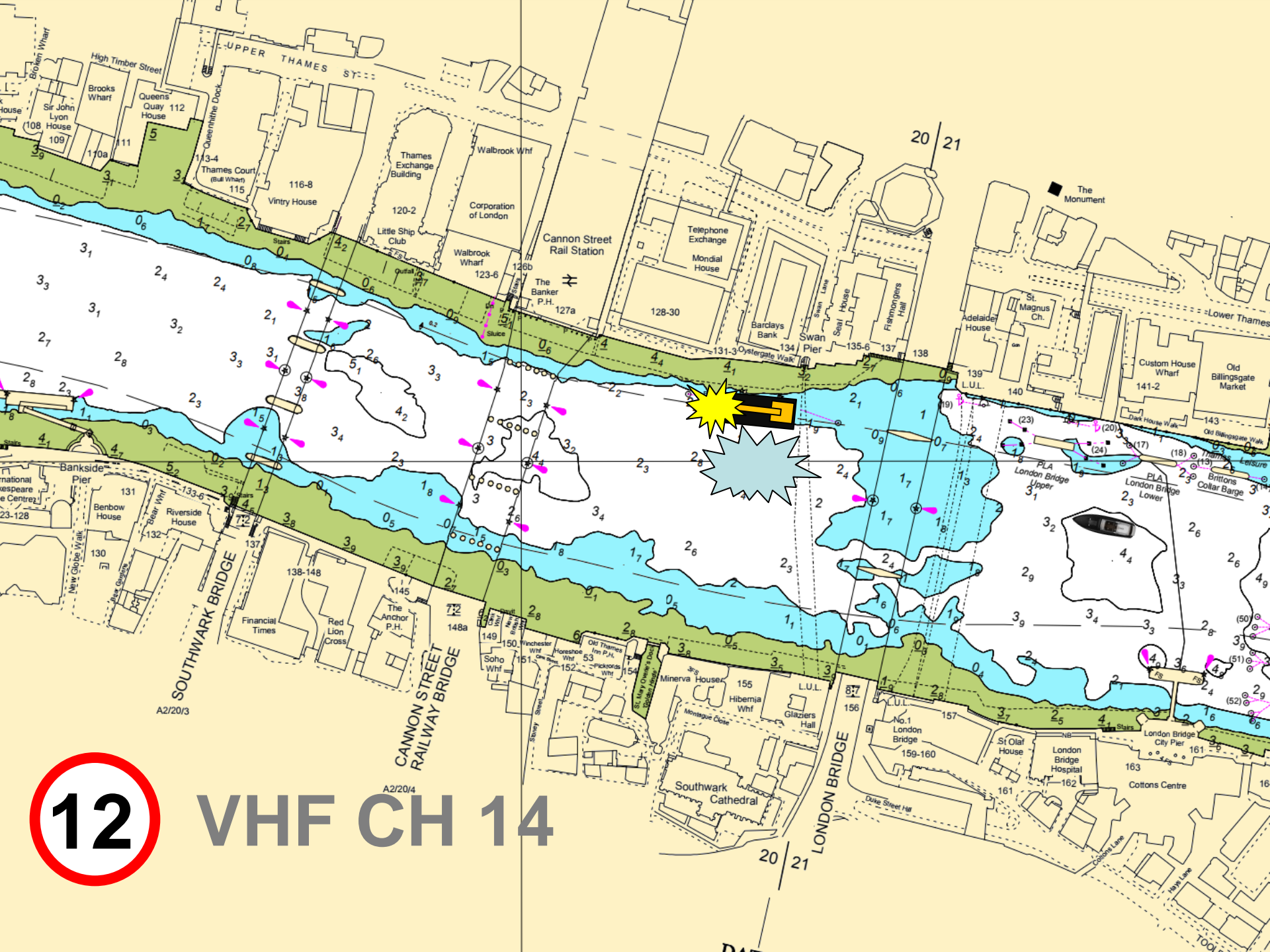
Seadog

SOLAR L

GARICO

GARICO

LA ESPANOLA



12

VHF CH 14





A red circle highlights a flag on a pole in the background, positioned between the cranes and the buildings.

NP4

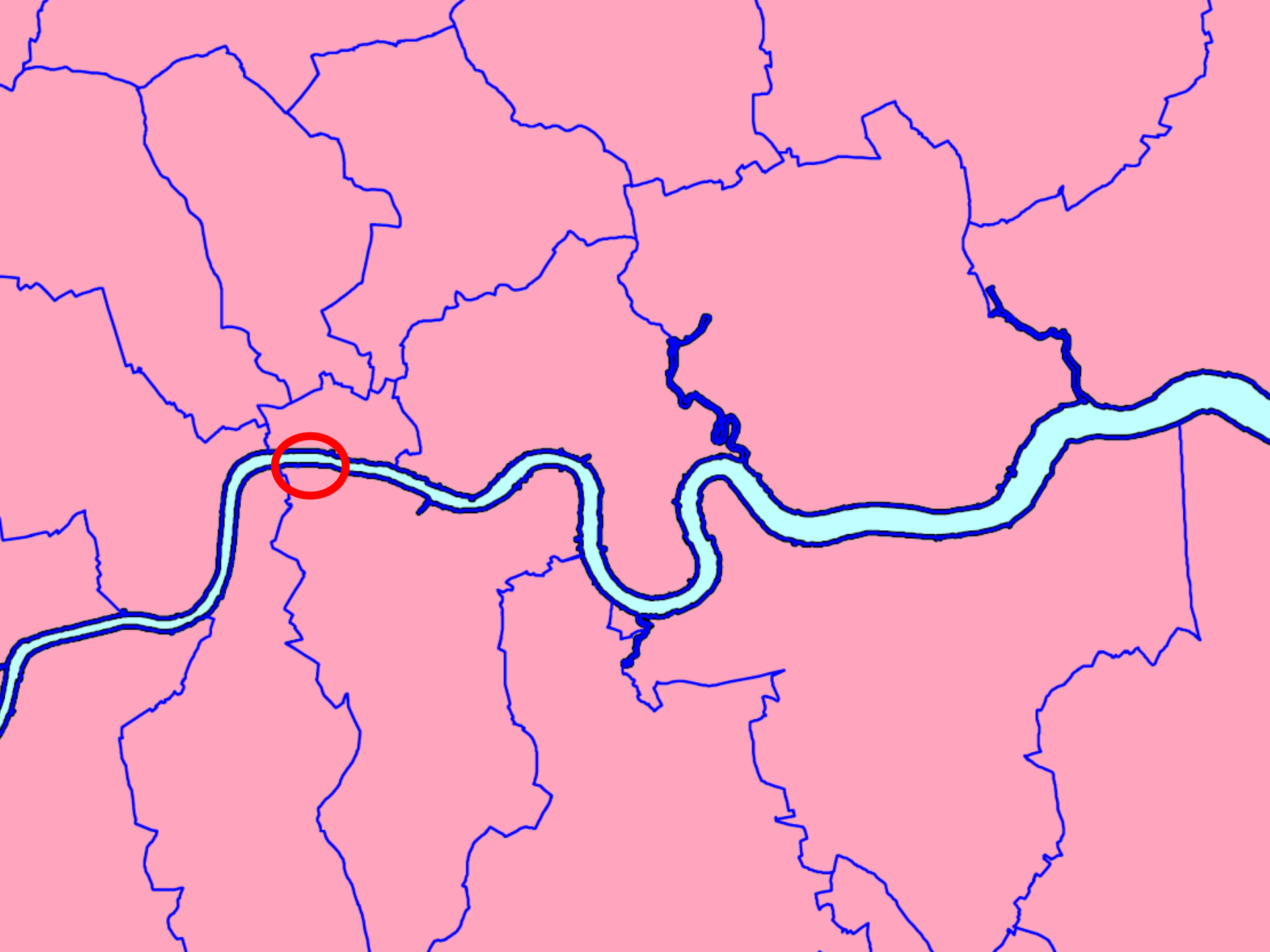
KG

HEIKO

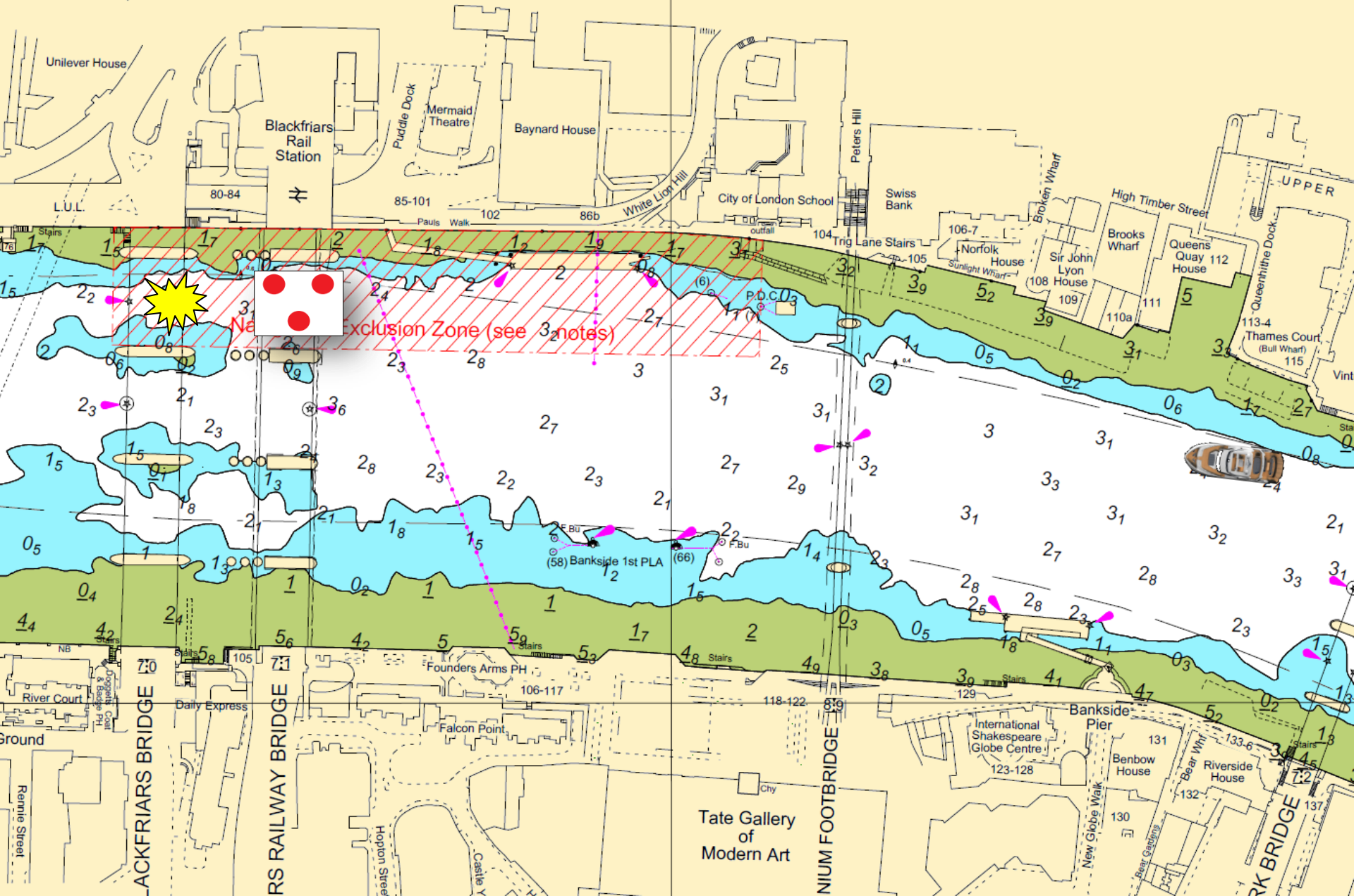
DIESEL

020 3793 9925













A yellow tugboat with a black hull and a white cabin. It has a mast with a blue and red flag. The name "HARVEY" is visible on the side of the hull.

A red barge with yellow superstructure. It carries a large black pipe. The name "HARVEY" is visible on the side of the hull. A yellow structure on the barge has a white square with a red number "7" on it.

A modern, multi-story building with a curved top and a dark facade. It has many windows and balconies.

A multi-story building with a gabled roof and a brick facade. It has several windows and a chimney.

A modern, multi-story building with a dark facade and many windows.





TTNC Club Member Perks

Club River Trips

Monday 12 March

- Putney to Woolwich

Thursday 15 March

- Teddington to Putney

Wednesday 21 March

- Woolwich to Putney

Tuesday 20 March

- Putney to Teddington

Bookings are limited and are available as of now.



PLA Open Day – 2nd June 2018

OPEN DAY

Saturday 2nd June 2018

11AM - 5PM



**RNLI
Lifejacket
Clinic**



**Port Control
Centre Visits**



'Maplin' tour



Royal Terrace Pier



'Titan' tour



Lifeboats

**To book a place on a tour, please go to
www.pla.co.uk/openday**

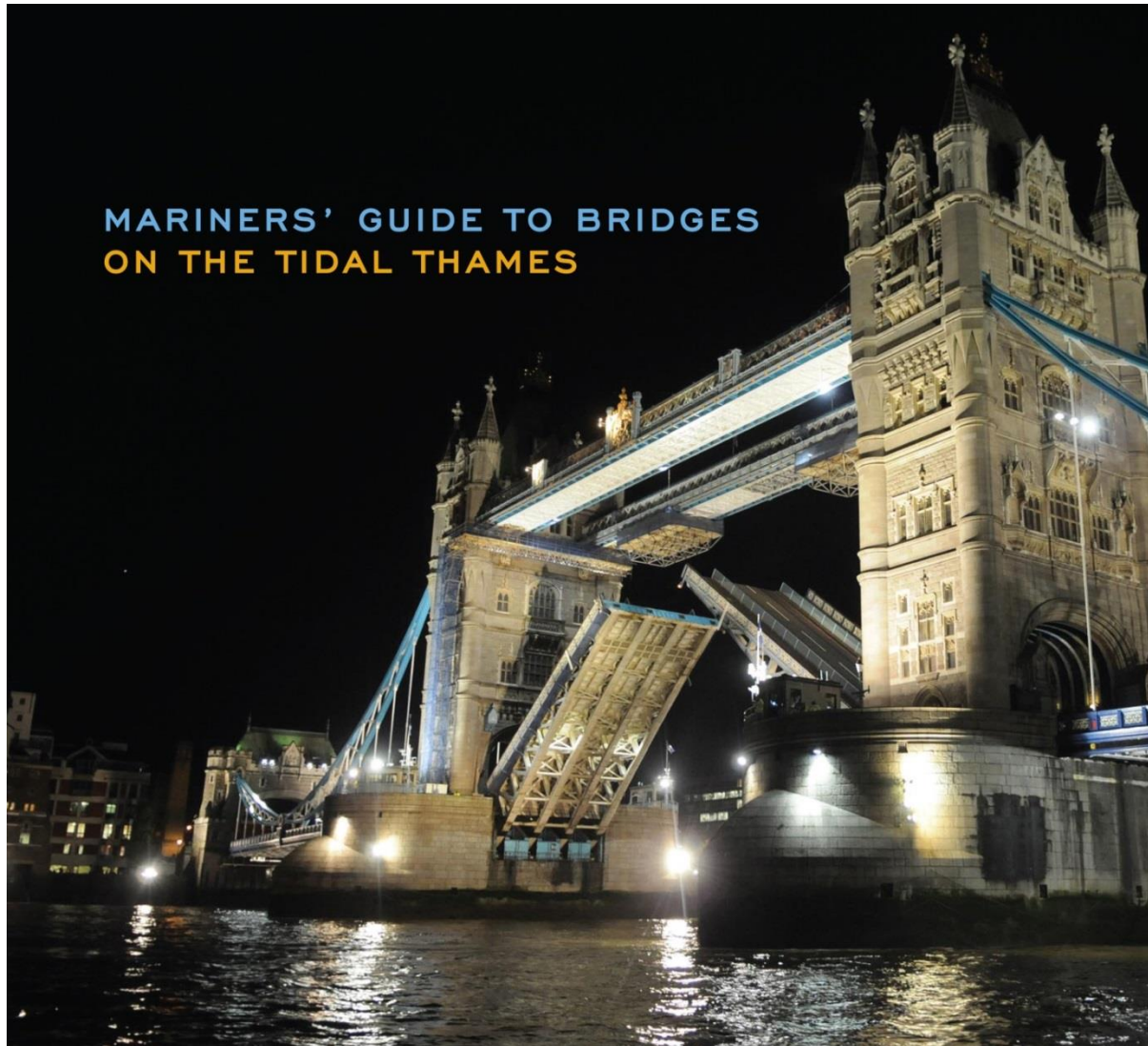
Open for booking at the end of April 2018

**PORT OF
LONDON
AUTHORITY**

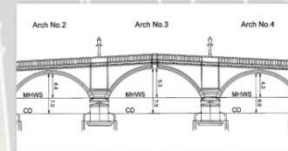
www.pla.co.uk

**PORT OF
LONDON
AUTHORITY**

Guide to Bridges



MARINERS' GUIDE TO BRIDGES
ON THE TIDAL THAMES





Q & A Session